

Answers for Math 103 Practice Test 1 (Winter 2015, Form 1)

1a. $x = -\frac{3}{4}$

1b. $x = -9$

1c. $x = -2$ or 4

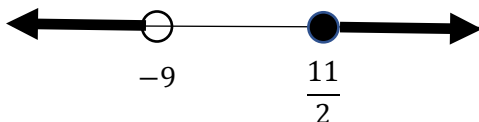
2. 270 adult tickets; 130 children tickets

3. 37.5%

4a. $x < \frac{3}{2}; (-\infty, \frac{3}{2})$



4b. $x < -9$ or $x \geq \frac{11}{2}; (-\infty, -9) \cup [\frac{11}{2}, \infty)$



4c. $x \geq -14$ and $x \leq 8; [-14, 8]$



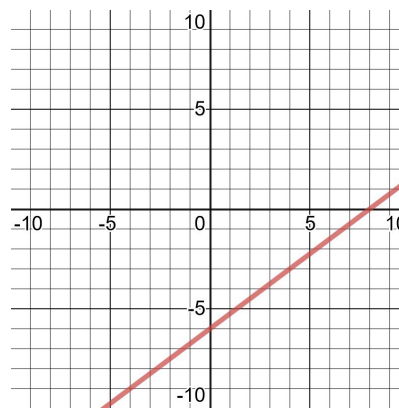
5. No, the value 1 returns both 2 and 4

6a. (8,0)

6b. (0,-6)

6c. $m = \frac{3}{4}$

6d.



7. $y = -\frac{2}{5}x + \frac{29}{5}$

8. $x = -4$

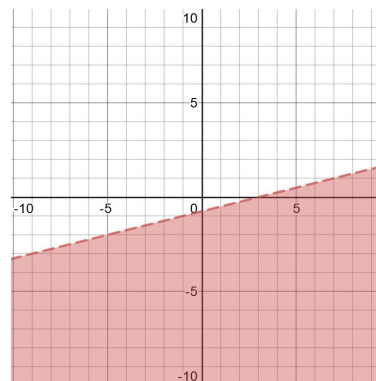
9. Neither, the slopes are not equal and not negative reciprocals.

10a. $-\frac{1}{3}$

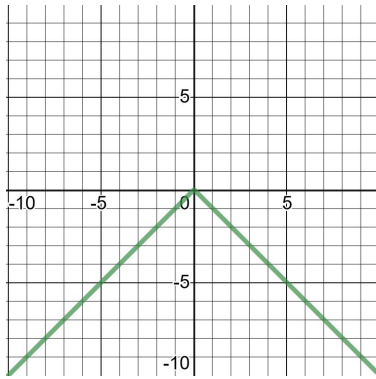
10b. $-\frac{7}{9}$

10c. $\frac{n+1}{n-7}$

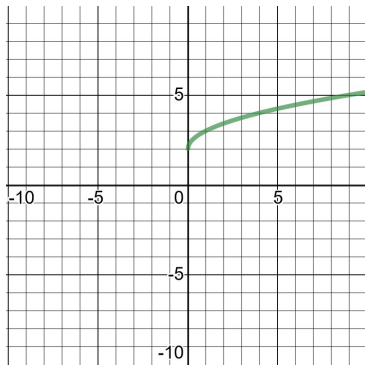
11.



12. Reflection over the x-axis



13. Vertical shift up 2



EC. 1.2 hours